



MAKE THE MOST
OF YOUR STAY

NEW HALL
HOTEL & SPA
SUTTON COLDFIELD, BIRMINGHAM

SHAPE YOUR BREAK

We are delighted to welcome you to New Hall, where we invite you to reconnect, unwind, and make our house your home.

All year round you will be spoilt for choice for things to do within the hotel, not to mention the abundance to see and do on our doorstep.

Below are just a few of the things you can discover during your stay.
This is your time – how will you spend it?

IN THE HOTEL

Arriving at New Hall is just the start of a unique experience...

Dining

There is a host of delicious food and drink experiences to try at our country estate:

The Bridge Restaurant

Our 2 AA Rosette restaurant serves a modern British menu of classic dishes, enhanced with a contemporary touch to bring out the best in the ingredients.

The Terrace Lounge and Bar

The Terrace Lounge and Bar offers guests a relaxing yet stylish place to enjoy a light lunch, curl up with a book and cup of coffee, or enjoy a delectable pre-dinner cocktail.

Afternoon tea and alfresco dining

Afternoon tea is a fan favourite at New Hall, served in the Bridge Restaurant. During the summer months, dine alfresco on the terrace - a beautiful oasis sheltered by perfectly preened hedges and filled with colourful blooms.

Private dining

Special occasions call for a special atmosphere. Dine regally in the Great Chamber, a historic room added to the original building to honour Henry VIII during his visit to Sutton Coldfield. This amazing space features exquisite furnishings and wall hangings.

Health club

Enjoy some 'me time' at the health club and spa, where we offer:

- Treatment rooms
- Indoor swimming pool and spa pool
- Sauna and steam rooms
- Gym
- Personal training
- Tennis court
- Pitch & putt





WALKS

With the local area well-known for its picture postcard landscapes, you are in a rambler's paradise.

New Hall Valley Country Park - Next to New Hall

With 200 acres to explore, there are plenty of walking routes to enjoy in this country park. During your adventures, look out for muntjac deer, kingfisher, heron and wagtails. [Click here for a 2km route.](#)

Sutton Park - 2 miles away

This 2,400 acre National Nature Reserve has open heathland, woodlands, seven lakes, wetlands, and marshes - each with its own rich variety of plants and wildlife - some rarely seen in the region. Cattle and wild ponies also graze on the land.

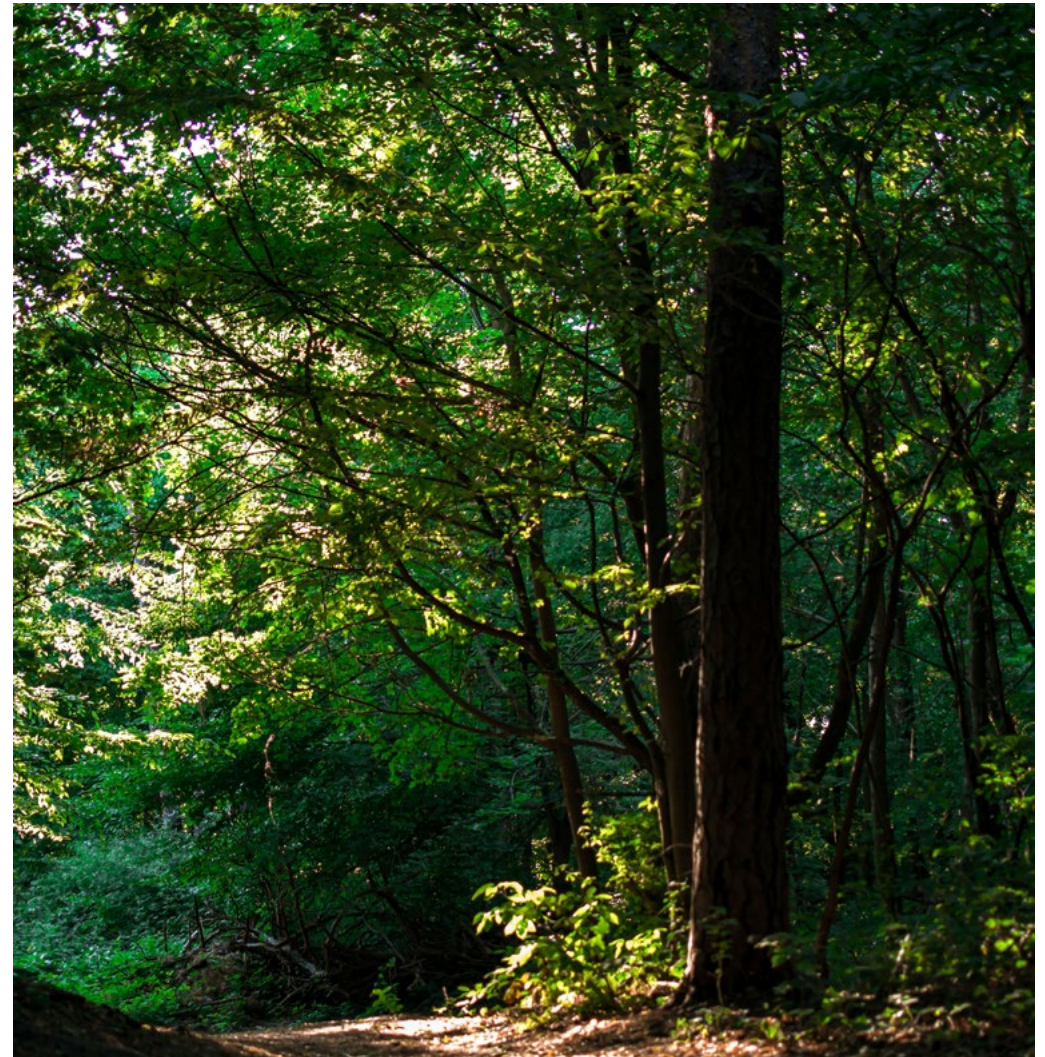
Here are some routes to choose from...

Longmoor Valley - 3.5km Walk

Some panoramic views from Rowton Bank on this walk show the vastness of Sutton Park in all its glory. The route starts at Banner's Gate car park, heading across open heathland. You may see Rowton's Well, a spring whose medicinal waters were used to treat eye complaints, and you can also see part of Icknield Street, one of the best surviving examples of a Roman road.

Sutton Park - 5km Walk

This circular walk has three possible starting points. It includes the Jamboree Memorial, the remains of a bank and ditch from 1120 AD that divided the park for management of the deer, and the Keeper's Well and Keeper's Pool.



WALKS

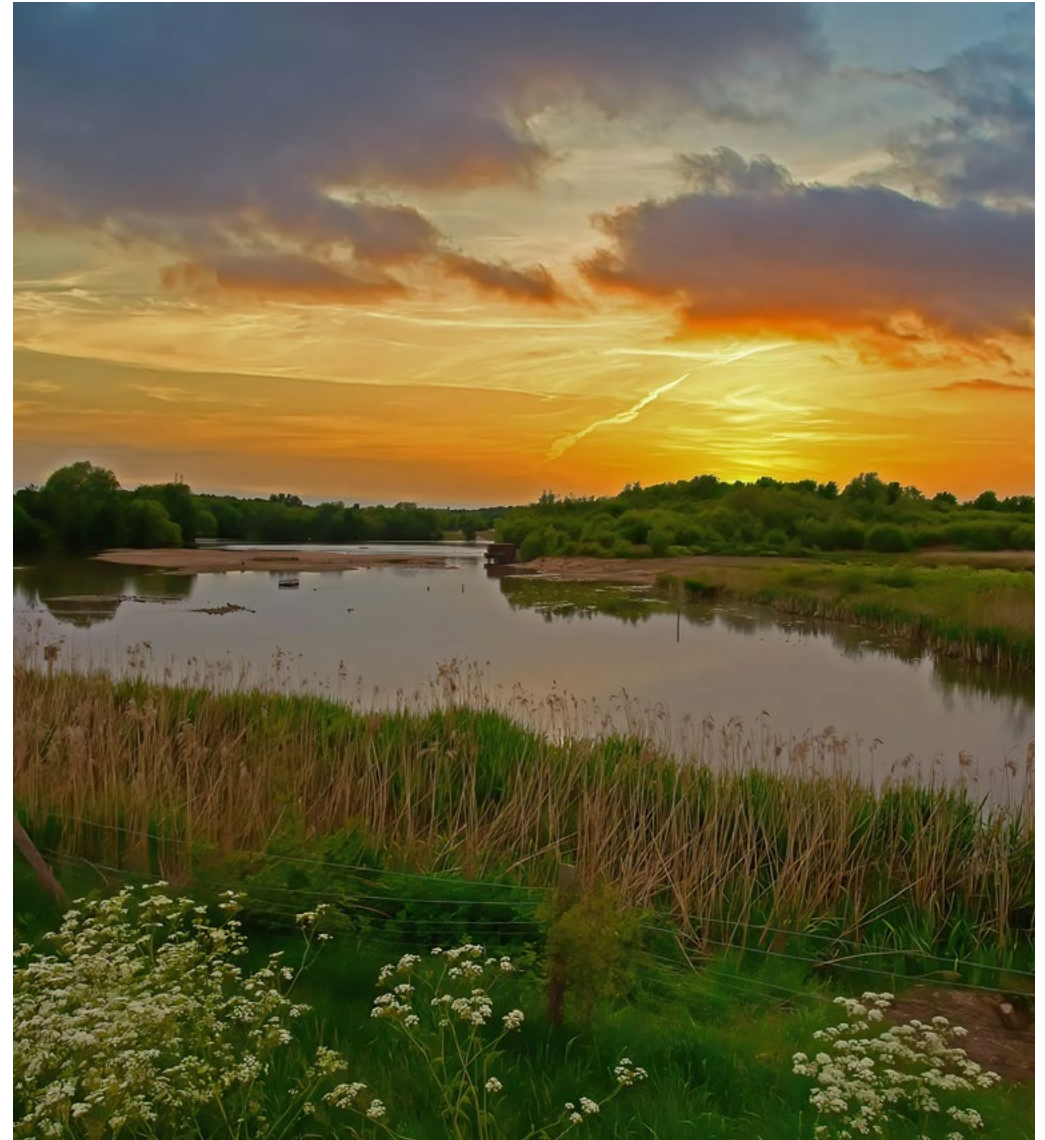
Edgbaston Reservoir and Summerfield Park - 10 miles away **5km Walk**

Built in 1827, the reservoir holds 300 million gallons and is used to top up Birmingham's canals. It is also used for recreational activities such as sailing and rowing.

The route begins at the information board, passing Birmingham Rowing Club, tennis courts, bandstand, and the sailing club. You walk along the dam past a 19th century wharf.

Walks in Sandwell Valley - 11 miles away

Sandwell Valley Country Park offers 660 acres that are ideal for a quiet stroll through woods, farmland and alongside pools and streams. Many of the paths are surfaced to give good accessibility, though many are left as natural tracks to keep a countryside feel.





FAMILY TRIPS

From the educational to the inspirational, you will find plenty of fun for all the family.

Wyndley Leisure Centre - 2 miles away

Wyndley Leisure Centre offers a heated main pool divided into a 25m deep water area for lane swimming and diving plus a 22m shallow water area and separate shallow teaching pool. There are also 1, 3 and 5 metre diving boards for public use at certain times.

Jaguar Experience - 4 miles away

What does it take to bring to life some of the most technologically advanced cars in the world? See 'Behind the Roar' at Jaguar Castle Bromwich and discover how the manufacturing operations have developed from building Spitfire aeroplanes in the 1940s, to iconic Jaguar vehicles.

Drayton Manor Theme Park - 8 miles away

A large adventure playground with 12 rides based on Thomas the Tank Engine, indoor play and parklands. Whether you're after a fun filled family ride or seeking adrenaline pumping fun, look no further than family favourites such as The Carousel or The Bounty Pirate Ship.



FAMILY TRIPS

ThinkTank Birmingham Science Museum - 9 miles away

Thinking caps are what's called for at Thinktank, the award-winning museum with over 200 hands-on displays across 4 floors, from steam engines and even a chocolate wrapping machine!

Treetop Adventure Golf - 11 miles away

Discover a crazy golf tropical paradise at Treetop Adventure Golf Birmingham, with two epic 18-hole courses to putt your way around, and all indoors, it's perfect for any weather.

Cadbury World - 9 miles away

A fun chocolate day trip to one of the UK's most popular family attractions. This self-guided tour tells the delicious history of chocolate, and of the Cadbury business.



FAMILY TRIPS

Black Country Living Museum - 19 miles away

See history brought to life and discover the story of the Black Country at this open-air living museum. Meet historic characters who will show you what it was like to live and work in one of the first industrialised landscapes in Britain as you explore 26 acres of reconstructed shops, pubs and houses.

Twycross Zoo - 21 miles away

A popular destination for family fun, this zoo offers the chance to see some of the most amazing animals on earth in 88 acres of beautiful countryside. There are several play areas, including a huge outdoor wet play area, so you can easily spend a whole day here and enjoy meeting some amazing creatures.

West Midlands Safari Park - 39 miles away

Meet all your favourites on this spectacular safari, including lions, rhinos and elephants, plus don't forget to visit the theme park for some thrills!





FOR COUPLES

With romantic scenery all around you, here are just a few places to enjoy with your special someone.

Birmingham Canal Tours - 8 miles away

What better way to explore the city and surrounding region than via its historical canals – all 313 miles of them to be precise.

Cliff Lakes - 10 miles away

For the young and young at heart, this is the place for you. Jump, bounce and slide on the Aqua Park, try wakeboarding, skiing, or surfing, or enjoy an ice-cold beverage overlooking the stunning views.

Gas Street Basin - 10 miles away

This is the heart of Birmingham's canal network where old meets new. The towpaths are lined with bars, pubs and modern buildings and the traditional narrowboats moored here can be seen to form a unique experience where industrial heritage meets modern, cosmopolitan living.

Ikon Gallery - 10 miles away

Ikon is an internationally-acclaimed contemporary art venue. The gallery features temporary exhibitions over two floors. Ikon shows work by artists from around the world and a variety of media is represented, including sound, film, mixed media, photography, painting, sculpture and installation.



FOR COUPLES

With romantic scenery all around you, here are just a few places to enjoy with your special someone.

Birmingham Botanical Gardens - 10 miles away

The Birmingham Botanical Gardens offers something for everyone, be it one of the four stunning glasshouses showing tropical rainforest to arid desert, the tearoom or the garden gift shop - all surrounded by some of the most beautiful gardens in the UK.

The Distillery - 10 miles away

Birmingham's Gin Distillery is a stone's throw away from Brindley Place and Barclay Card Arena, perfectly situated on the canal. Book a place on its 'Gin School' and take a journey through the distilling process. Pick botanicals for your very own gin, bottle it, label it, and take it home!

Winterbourne House and Garden - 11 miles away

Restored to its Edwardian Arts and Craft splendour, Winterbourne House is a unique heritage attraction - set within seven acres of beautiful botanical gardens and home to over 6,000 plant species from around the world.





HISTORICAL

Step back in time and uncover both New Hall and Birmingham's rich heritage and cultural legacy.

New Hall

The hotel itself is steeped in history, reputed to be the oldest listed inhabited moated house in England. Read all about our rich history, and be sure to look out for the many original features throughout New Hall while you explore during your stay.

Middleton Hall - 6 miles away

Middleton Hall is set in 42 acres of the peaceful North Warwickshire countryside and run by an independent charitable trust. Journeying through the magnificent manor house, Georgian Walled Garden and peaceful grounds, you will discover over 950 years of remarkable history.

Tamworth Castle - 9 miles away

Step back in time through 900 years of history in Tamworth Castle. Wander the chambers and hallways of this unique building and get a real sense of how the Saxons, Normans, Tudors and Victorians spent their time in the castle.

Lichfield Cathedral - 11 miles away

There has been a Cathedral in Lichfield for over 1300 years and its story is one bursting with history, art, culture and life.

Kenilworth Castle and Elizabethan Garden - 20 miles away

A vast medieval fortress that endured a famous siege and later became an Elizabethan palace, Kenilworth Castle is among Britain's biggest historical sites. Experience 900 years of history as you can marvel at the mighty medieval keep, climb the towers to admire the fantastic views, and imagine the majesty of the Great Hall.



LET THE ADVENTURE BEGIN

New Hall Hotel & Spa

Walmley Road, Sutton Coldfield,
Birmingham B76 1QX

0121 378 2442

newhall@handpicked.co.uk

handpickedhotels.co.uk/newhall

*Hand*PICKED
HOTELS